



92113600

**ROUGH
COUNTRY**
SUSPENSION SYSTEMS®

JEEP JK ADJ FR LOWER CONTROL ARMS

Thank you for choosing Rough Country for your suspension needs.

In addition to these instructions, professional knowledge of disassemble/reassembly procedures as well as post installation checks must be known. Attempts to install this system without this knowledge and expertise may jeopardize the integrity and/or operating safety of the vehicle.

PRODUCT USE INFORMATION

Rough Country makes no claims regarding lifting devices and excludes any and all implied claims. We will not be responsible for any product that is altered.

If question exist we will be happy to answer any questions concerning the design, function, and correct use of our products by calling 1-800-222-7023.

This kit features Rough Country's adjustable joint design. Adjustable end tool is included in kit. Assemble the joints per the separate instruction sheet Part # 92RCJ120 provided.

NOTICE TO DEALER AND VEHICLE OWNER

Any vehicle equipped with any Rough Country product should have a "Warning to Driver" decal installed on the inside of the windshield or on the vehicle's dash. The decal should act as a constant reminder for whoever is operating the vehicle of its unique handling characteristics. INSTALLING DEALER - it is your responsibility to install the warning decal and forward these installation instructions on to the vehicle owner for review. These instructions should be kept in the vehicle for its service

Tools Needed:

10mm Wrench
21mm Wrench
18mm Wrench
18mm Socket
19mm Wrench
19mm Deep Well Socket
14mm Wrench
Jack
Jack Stand

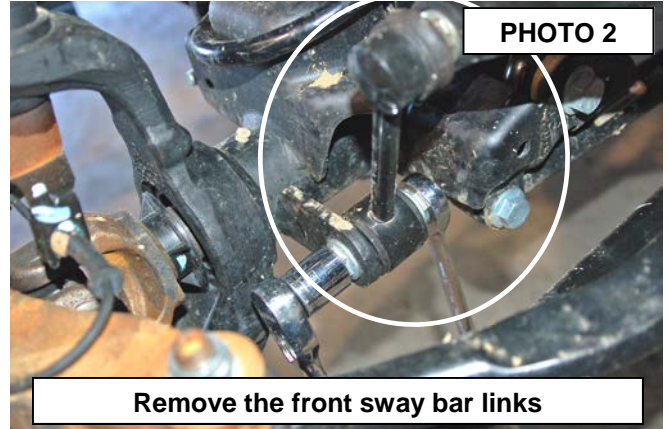
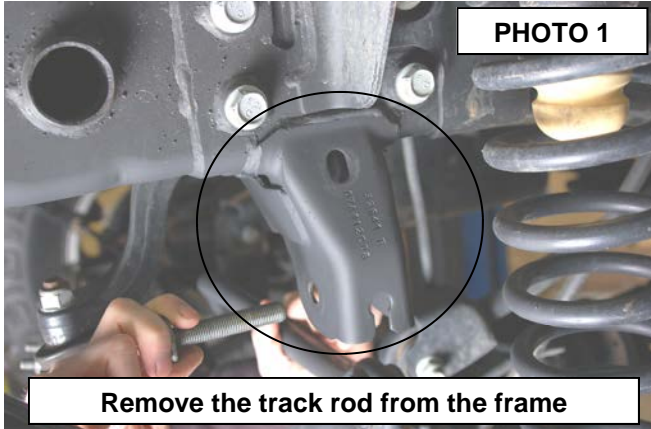


Kit Contents:
2-X-flex Joints
2-Arms

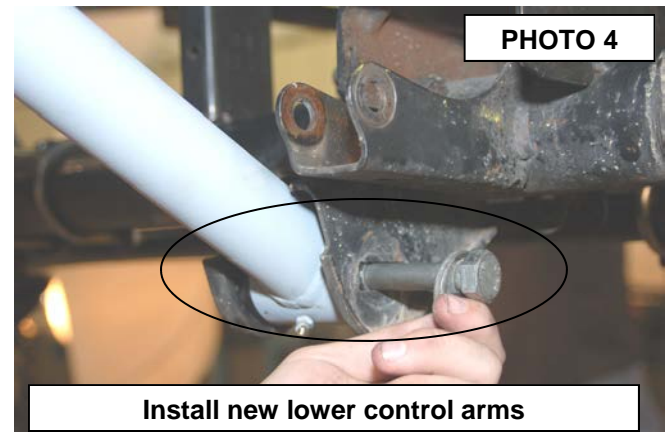
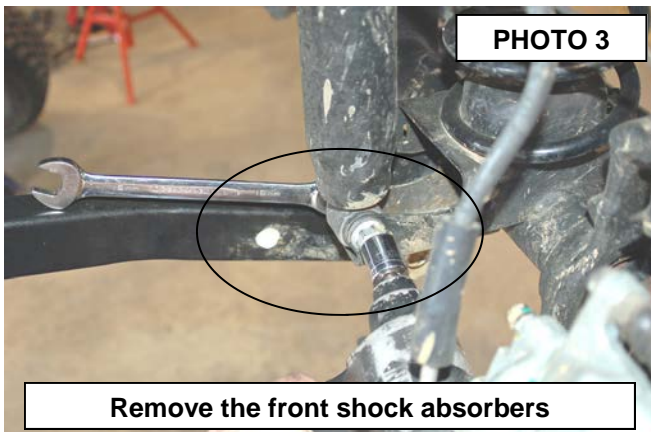
**ROUGH
COUNTRY**
SUSPENSION SYSTEMS

FRONT INSTALLATION INSTRUCTIONS

1. Place vehicle in park and chock the rear wheels. Raise the front of the vehicle with a jack and secure a jack stand beneath each frame rail behind the front control arms. Ease the frame down onto the stands.
2. Remove the front tires/wheels, using a 19mm deep well socket.
3. Using a 21mm socket, remove bolt securing the front track bar to the frame. Retain stock hardware. **See Photo 1.**
4. Using a 18mm socket and wrench remove the bottom sway bar bolts. Using a 21mm socket and 21mm wrench, remove the top of the sway bar link. Retain hardware for later use. **See Photo 2.**



5. Remove the lower shock bolt using a 18mm socket and wrench. **See Photo 3.** Retain the lower stock hardware.
6. Using a 21mm socket and wrench loosen the upper and lower control arm bolts at the axle and frame, but do not remove.
7. On some models it will be necessary to remove the brake line bracket from the frame to allow the coils to be removed. Using a 10MM socket, remove the brake line bracket from the stock location.
8. Push down on the axle to allow room for the coils to be removed. Retain coil isolators.
9. Using a 21mm wrench, remove the bolts that secure the lower link arms to the axle.
10. Adjust the lower control arms to a length of 22 7/8" from center of hole to center of hole and tighten the jam nut using a 1 7/8" wrench. Install the adjustable heim end in the frame mount and the other end in the axle mount. Do not tighten arms in the mounts at this time. **See Photo 4.** The bend on the lower control arm should be facing inward to allow for the tires to achieve full lock to lock turning.
11. Reinstall the coil springs.



12. Reinstall the sway bar links and shock absorbers.
13. Reinstall the wheels and tires and lower the vehicle to the ground. Tighten all arm hardware.
14. Reinstall the track rod in the frame mount.

POST INSTALLATION

- Check all fasteners for proper torque.
- Re-torque all fasteners after 500 miles and recheck after 1000 miles.
- Have a qualified alignment center realign the front end.

Thank you for choosing Rough Country for your suspension needs.

**ROUGH
COUNTRY**
SUSPENSION SYSTEMS